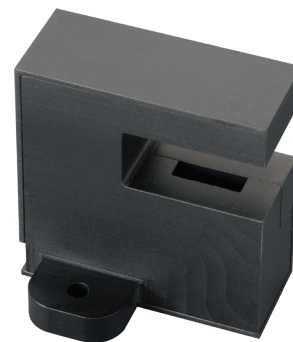


Coin Detection Sensor

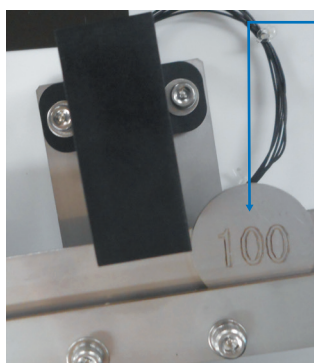
Coin Detection Sensor / MSG2A66

Product outline

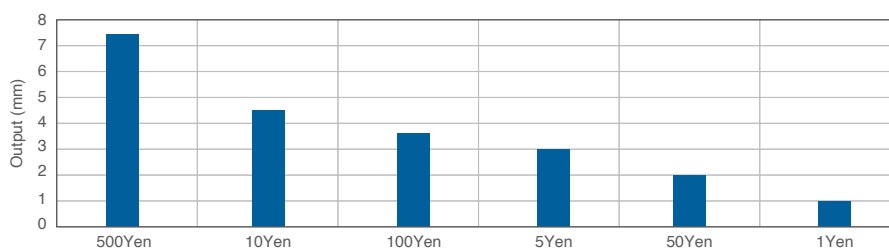
- The product is equipped with a light emitter and a light receiver, which can detect the size of an object (such as a coin) inserted between them with high accuracy and high speed.
- Customization of area size, detection algorithm and output format (UART communication) are possible upon request.



Detection example



- Coins are detected by moving them along an inclined rail.
- One end of the coin is aligned with the rail so the other end of the coin can be detected.



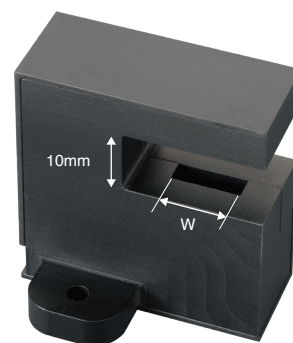
Specification

Electro-Optical Characteristics

(Ta=25°C)

Item	Symbol	Conditions	Min.	Typ.	Max.	Unit
Operating voltage	Vcc	—	4.75	5.0	5.25	V
Current consumption	Icc	Vcc=5V	—	16	20	mA
Detection cycle	T	Vcc=5V	—	1.7	—	ms
Detection width	W	UART output, Digital value ⇒ Light blocking range conversion value	0	—	8.1	mm
Shading range resolution	P	—	63.5			um

- Output : UART communication (3.3V)
- Detectable object : Infrared opaque object



2025_11_W

