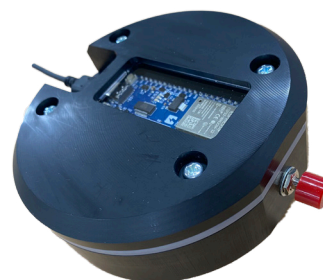


# Reflective Water Detection Sensor Module

## Reflective Water Detection Sensor Module / MSG1A03

### Product outline

- Water leakage is detected stably by combining a LED with a wavelength that is easily absorbed by water and a dedicated photodiode.  
Sensor module that notifies detected data through BLE.  
※Wi-Fi support is available if requested.



### Features

- Periodically check the water-detection (yes/no) with a Wi-Fi or BLE.
- USB power supply : TYPE C
- Detection range :  $\Phi 5\text{mm}$
- Detecting distance : 10mm
- Detectable water thickness : 1mm or more
- Supports a variety of flooring materials through calibration

### Product outline

#### Electro-optical Characteristics (BLE compliant product)

Item	Symbol	Conditions	Min.	Typ.	Max.	Unit
Operating Voltage	$V_{\text{USB}}$	—	4.5	5	5.5	V
Current consumption	$I_{\text{CC}}$	$V_{\text{USB}}=5\text{V}$ During wireless communication	—	—	10	mA
Communication frequency	$t_{\text{INT}}$	$V_{\text{USB}}=5\text{V}$	—	2	—	Times/hr
Communication speed	$R_{\text{D}}$	$V_{\text{USB}}=5\text{V}$	—	1,000	—	kbps
Applicable range of flooring materials(OD)	$F_{\text{AR}}$	$V_{\text{USB}}=5\text{V}$	OD1	—	—	—
Maximum tolerable ambient illuminance	$E_{\text{v}}$	$V_{\text{USB}}=5\text{V}$ OD0.3 (glossy surface)	—	1,000	—	Lx

2025\_11\_W

