

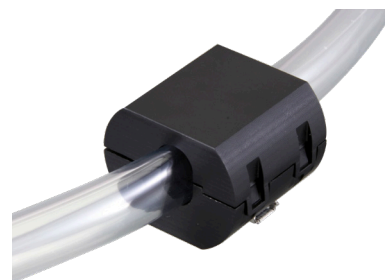
液体色判別センサ

Liquid Color Discrimination Sensor

液体色判別センサ / MSG2A48(仮) Liquid Color Discrimination Sensor / MSG2A48(Temporary)

製品概要 Product outline

- 液体色判別センサは、3色LEDと1つのフォトトランジスタで構成される透過型センサです。
The liquid color discrimination sensor is a transmissive sensor consisting of a three-color LED and one phototransistor.
- 液体を透過した光から色や濃度を判別します。
The color and density are determined from the light that has passed through the liquid.



用途 Applications

水質判別
Water quality discrimination

血液・体液の簡易色判別
Simple color discrimination of blood and body fluids

ライン検査での色判別
Color discrimination by line inspection

特長 Features

- インターフェース:UART
Interface: UART
- IF調整で各LEDの光量を変更可能
The amount of light of each LED can be changed by adjusting the IF
- LED3色の透過光を個別に読み取り
Reads the transmitted light of 3 LED colors individually
- 光源波長やセンサ形状等、用途に合わせて仕様をカスタマイズ可能
Specifications can be customized according to the application, such as the wavelength of the light source and the shape of the sensor

使用方法 How to use

- 液体を透過した光をLED3色の出力毎にフォトトランジスタで読み取り、キャリブレーション時に設定した基準値に対する比率として出力します。

The light transmitted through the liquid is read by the phototransistor for each output of the three LED colors and output as a ratio to the reference value set at the time of calibration.

