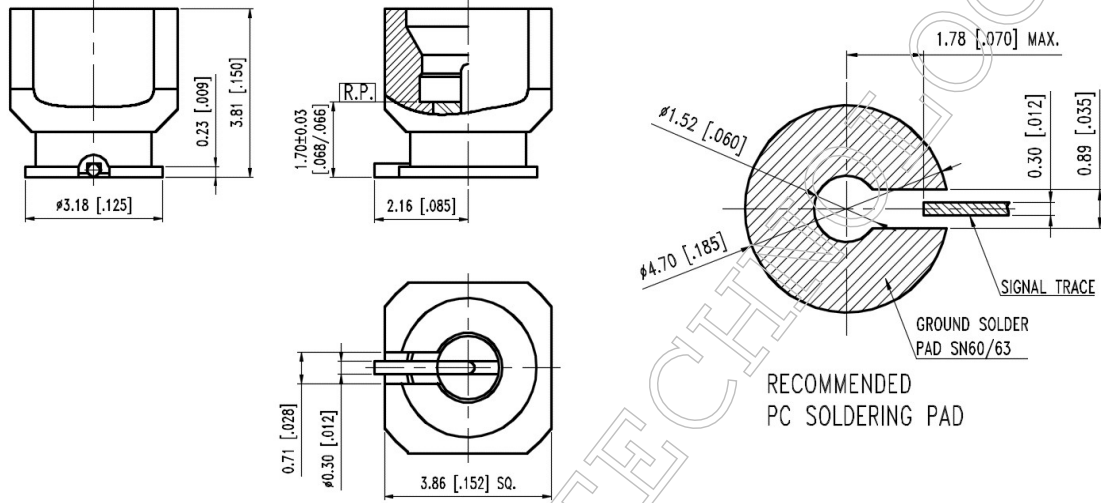


## ■ Outline Dimension Drawing

Dimensions: mm[inch]



## ■ Material Specification

Description	Material	Plating
Body	Stainless steel	Gold
Contact	BeCu	Gold
Dielectric	Torlon	Yellow

In the effort to improve our products, we reserve the right to make changes judged to be necessary



■ **Electrical Specification**

Description			Description		
Impedance	50	$\Omega$	Insulation Resistance	5000	M $\Omega$ Min.
Frequency	18	GHz	Inner Contact Resistance	4	m $\Omega$ Max.
VSWR	1.5	Max.	Outer Contact Resistance	2	m $\Omega$ Max.
Insertion Loss	0.5	dB Max.			
Voltage Rating	325	Vrms Max.			
Dielectric Withstanding Voltage	500	Vrms Max.			

■ **Mechanical Specification**

Description		
Engagement Force		
Full Detent	4.3	lbs. Max.
Disengagement Force		
Full Detent	3.8	lbs. Min.
Connector Durability	100	matings min.
Center Contact		
Axial Force-Mating End	3.5	lbs.
Axial Force-Opposite End	N/A	lbs.
Weight	N/A	g

■ **Environmental Specification**

Description		
Temperature Min.	-65	$^{\circ}$ C
Temperature Max.	165	$^{\circ}$ C
Hermetic Seal	N/A	

In the effort to improve our products, we reserve the right to make changes judged to be necessary