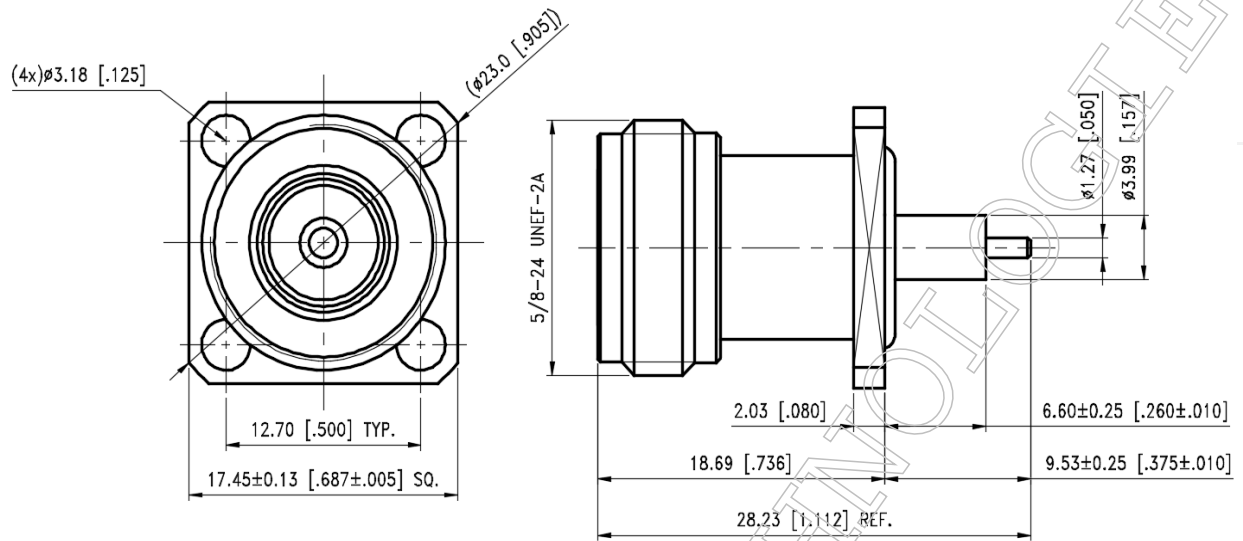


Outline Dimension Drawing

Dimensions: mm[inch]



Material Specification

Description	Material	Plating
Body	Stainless steel	Passivate
Contact	BeCu	Gold
Dielectric	PTFE	
O-ring	S.I.R	Black

In the effort to improve our products, we reserve the right to make changes judged to be necessary



▪ **Electrical Specification**

Description			Description		
Impedance	50	Ω			
Frequency	11	GHz	Insulation Resistance	5000	MΩ Min.
VSWR	1.22	Max.	Inner Contact Resistance	3	mΩ Max.
Insertion Loss	0.2	dB Max.	Outer Contact Resistance	3	mΩ Max.
Voltage Rating	500	Vrms Max.			
Dielectric Withstanding Voltage	1000	Vrms Max.			

▪ **Mechanical Specification**

Mechanical Specification			Description	
Center Contact			Recommended Torque	12~15 in. lbs
Axial Force-Mating End	6	lbs.		
Axial Force-Opposite End	6	lbs.		
Connector Durability	500	cycles		
Weight	N/A	g		

▪ **Environmental Specification**

Description					
Temperature Min.	-65	°C			
Temperature Max.	165	°C			
Hermetic Seal	N/A				

In the effort to improve our products, we reserve the right to make changes judged to be necessary