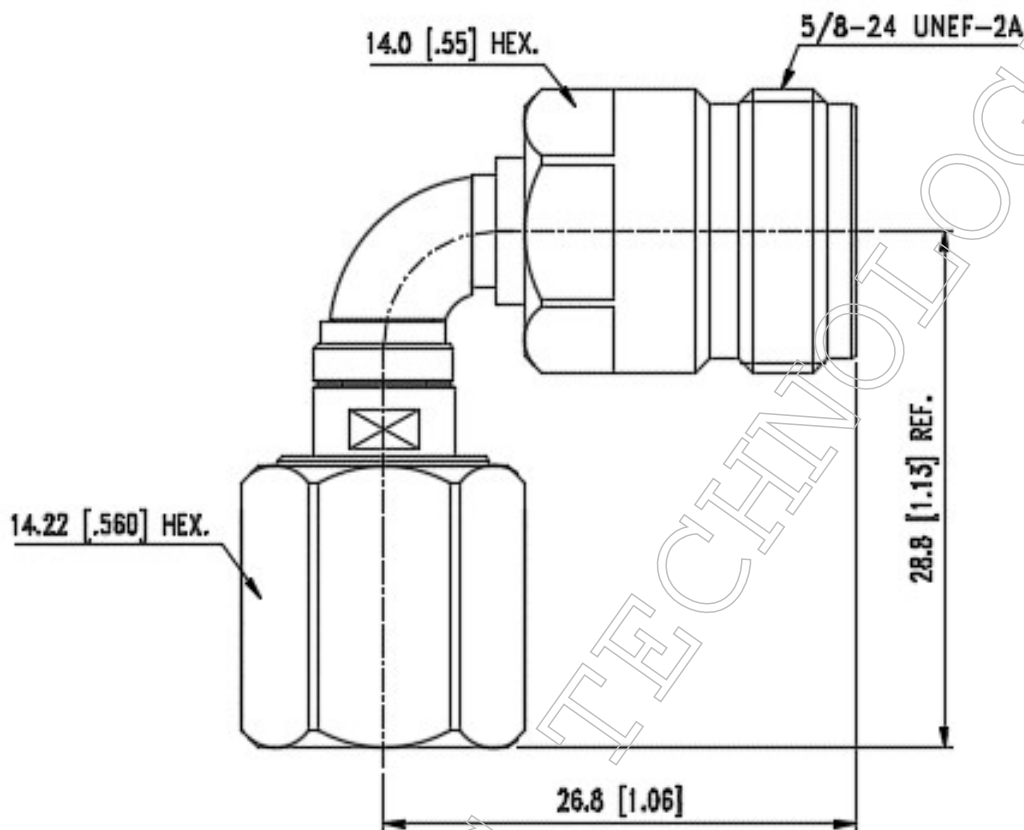


■ **Outline Dimension Drawing**

Dimensions: mm[inch]



■ **Material Specification**

Description	Material	Plating
Body*3	Stainless steel	Passivate
Contact*5	BeCu	Gold
Dielectric*3	PTFE	
R-ring	P.Bronze	Nickel
Coupling nut	Stainless steel	Passivate

In the effort to improve our products, we reserve the right to make changes judged to be necessary



■ **Electrical Specification**

Description			Description		
Impedance	50	$\Omega$	Insulation Resistance	5000	M $\Omega$ Min.
Frequency	18	GHz	Inner Contact Resistance	3	m $\Omega$ Max.
VSWR	1.2	Max.	Outer Contact Resistance	3	m $\Omega$ Max.
Insertion Loss	0.6	dB Max.			
Voltage Rating	500	Vrms Max.			
Dielectric Withstanding Voltage	1500	Vrms Max.			

■ **Mechanical Specification**

Description			Description		
Center Contact			Recommended Torque	10~12	in. lbs
Axial Force-Mating End	6	lbs.	Coupling Nut Retention	100	lbs Min.
Axial Force-Opposite End	6	lbs.			
Connector Durability	500	cycles			
Weight	N/A	g			

■ **Environmental Specification**

Description		
Temperature Min.	-65	$^{\circ}\text{C}$
Temperature Max.	165	$^{\circ}\text{C}$
Hermetic Seal	N/A	